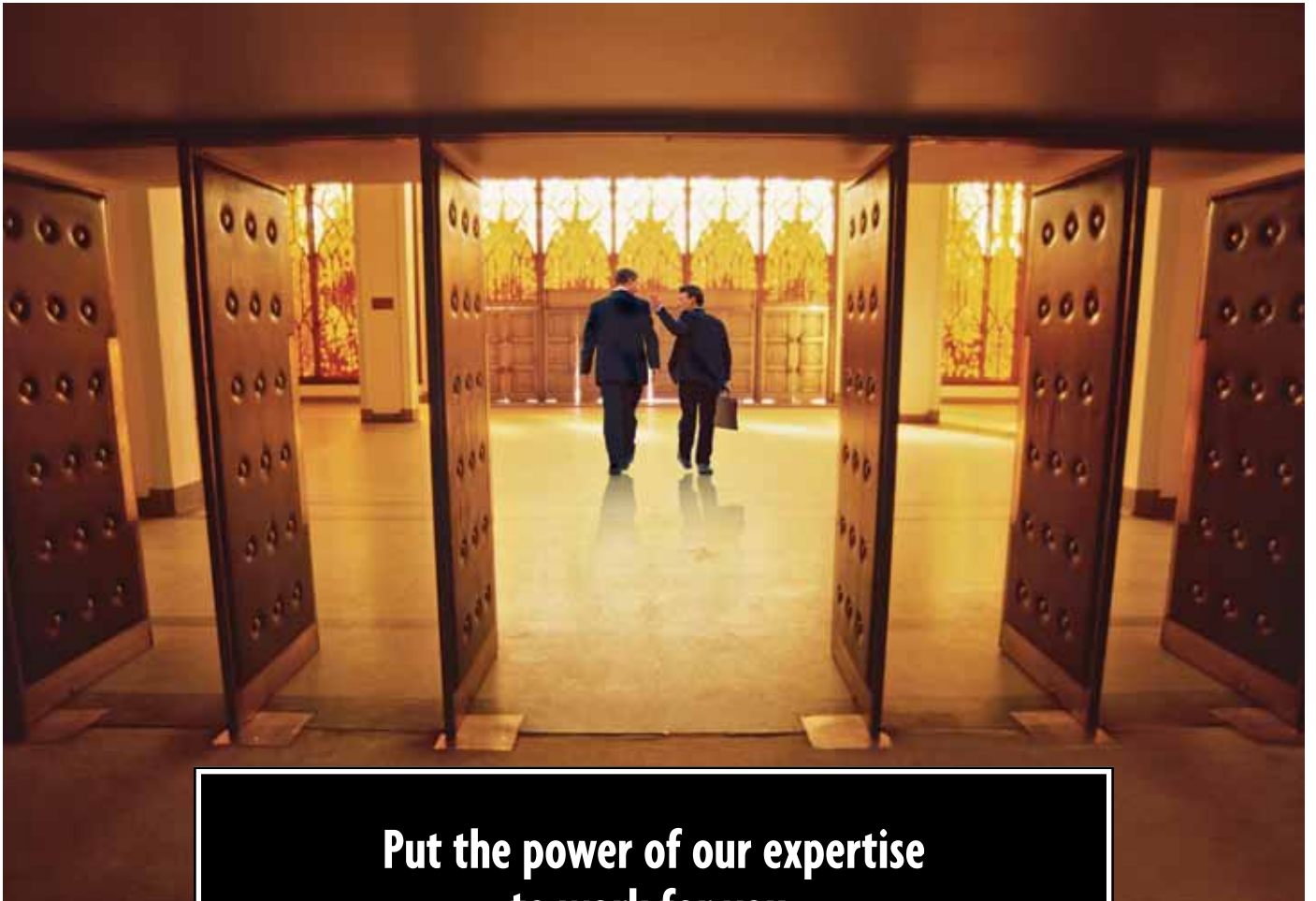


COSP

A Publication of Church Supplies & Services | May 2009

Fruits of the Vine

20+
YEARS
...AND COUNTING
CHURCH SUPPLIES & SERVICES INC.



**Put the power of our expertise
to work for you.**

For financial solutions specifically tailored to the religious community, Comerica Bank stands apart. Our Relationship Managers understand your unique challenges and are devoted to the needs of your ministry. We're a leader in lending to the faith community with over \$400 million in loans nationwide. Plus, we offer local decision making and other specialized solutions, such as automated giving and tuition, along with deposit, trust, and treasury management services. Help your congregation flourish. Call Comerica today.

Donna Mittendorf
Sr. Vice President
Houston
dmittendorf@comerica.com
713-679-5959

Jim Terrell
Sr. Vice President
Dallas
jcterrell@comerica.com
214-589-1310

Dave Marks
Sr. Vice President
Austin
dhmarks@comerica.com
512-427-7116

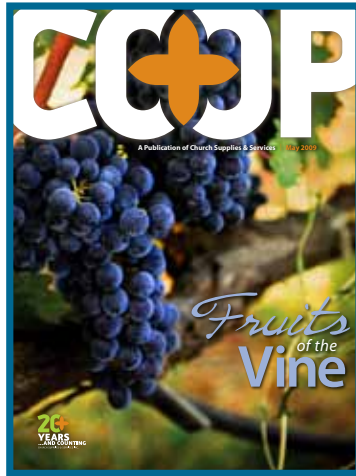


We listen. We understand. We make it work.®

Member FDIC. Equal Opportunity Lender.

www.comerica.com

CONTENTS



MAY 2009

FEATURE ARTICLE

Fruits of the Vine page 18

Many ministries today, like the farmer, look with watchful eyes that something will begin to sprout this spring—only to remember they forgot to plant anything.

Departments

Clean Sweep Page 6

Many generators of waste are not aware of the different waste classifications, collection methods, and/or new processes in the market place to capture and reduce waste costs.

More Power To You Page 8

Hopefully, most people in Texas now realize that the electricity market is predicated on the natural gas commodity market, the fuel choice for generations in Texas.

Bank Notes Page 38

The health of the banking system is a mirror reflection of the current economic condition, so the real question is: How healthy is your economy?

We've Got You Covered Page 40

This information may not completely eliminate the risks for your summer activities, but a little planning ahead could help you save ministry dollars, time and stress.

Know Your Vendor Page 43

National Signs is the recognized leader in creating unique and effective signs for worship facilities of all denominations.

PhoneTree In this day of economic challenges, your church needs a communication system that is fast, dependable and affordable.



12

Bearing Fruit that will Last

Only a well-tended vine will produce healthy fruit, and only a well-tended church will produce healthy ministries.



26

Fruit Grows in Unexpected Places

Ninety-nine percent of all employees want to do a good job. How they perform is simply a reflection of the one for whom they work.



31

Worship in all Aspects of Life

I realized that music in itself was not wrong worship, but only a part of worship. Worship was more than what "tradition" had taught me growing up in the church.

Keep your contact information current. The lifeline of communication to our members is through correct contact information, i.e. key contact names, phone numbers and e-mail addresses. All updates should promptly be sent to danbishop@churchco-op.org. Help us keep you informed of the latest in events and savings from our vendors.

Editors Note: For submitting articles, artwork or comments about this publication, please contact:
Dan Bishop P.O. Box 821243 Houston, TX 77282-8243, 888.350.3264
danbishop@churchco-op.org



Church Supplies & Services, Inc CO+OP
Issue Dates: Feb, May, Aug, Nov

AUTHORIZED ORGANIZATION Church Supplies & Services, Inc.

LOCATION 1880 S. Dairy Ashford, Suite 208, Houston, TX 77077

TELEPHONE 281.531.5629 **INTERNET** www.churchco-op.org

Issue Number: 15 Subscription Price \$0.00

Don't grow weary of doing good (or well)...

II Thessalonians 3:13

Millard Fuller, beloved and recently deceased founder of Habitat for Humanity, is credited with saying "I've read the Bible many times and never found the word 'Retire' in it." Our opportunity is to live every day with purpose in our lives.

According to Millard, we need to ask others to share our purpose. "We have tried asking, and not asking, and asking works better." Waiting to be invited to take part in ministry are many who have time and resources. Asking can produce desirable results, for them and others. All of us have something to contribute.

Could this be any more true for our CO+OP than it is now?



We are more than 1,100 members and 30+ vendors. Our mission is to help churches save money on what they are already buying. When we choose to work together, something remarkable happens—everyone gains. Have ministries ever needed to be more careful to obtain value than at this time?

Of you we ask: Would you consider reviewing our Vendor list and your needs to determine whether you

can help your ministry and all of the others in the CO+OP? A place to begin is page 44 of this issue of CO+OP Magazine, where all the vendors, categories and contacts are listed....or on our website www.churchco-op.org.

Let us help you with electricity, waste management, disaster recovery or your HVAC agreement; with your new furniture, insurance; background checks, copy and print needs; with business equipment or with any other category. Working together we can do much and help many.

We have a new vendor for you. **American Business Machines** is among the most successful business equipment vendors in the nation. They commit to excellence in their relationships with our Members. Goods and services are priced for real value. See their ad on Page 5 and give them a call.

**live every
day with
purpose**

Vote with your voice, your fingers and your feet. Help make the CO+OP even more meaningful for ministries. CO+OP methods have worked well for more than 20 years, because you and others in your role caused it to be a worthwhile effort. The reasons to work together are all around you. Thanks for what you do to help us all.

Kind regards for really good Stewardship...daily.

Together We CO+OP.

Together We Serve.

Dan Bishop
Executive Director

20+
YEARS
...AND COUNTING
CHURCH SUPPLIES & SERVICES INC.



Church Supplies & Services, Inc.

Board of Directors 2009

Randy Barnett

Champion Forest Baptist Church, Houston, TX
rbarnett@cfbc.org

Gary Benson - Secretary

Insurance One Agency, The Woodlands, TX
garyb@insuranceoneagency.com

Rick Burdon

Faithbridge United Methodist Church, Houston, TX
rick.burdon@faithbridge.org

Dr. Donna Bowman

First Baptist Church, Stephenville, TX
donna@fbcstephenville.org

Rod Cadenhead

Pinelake Baptist Church, Brandon, MS
rcadenhead@pinelake.org

Sharon Davis

Foundry United Methodist Church, Houston, TX
sharon.davis@foundrychurch.org

Bob Fox (Retired)

Houston, TX
lonestarfoxes@att.net

Jon Gray

Memorial Drive United Methodist Church, Houston, TX
jongray@mdumc.org

Jody Griggs

Memorial Drive United Methodist Church, Houston, TX
jodygriggs@mdumc.org

Dale Hendrix - Treasurer

First Presbyterian Church of Houston
dhendrix@fpchouston.org

Patti Malott - Immediate Past Chairman

Upright Ministries, Spring, TX
patti@uprightministries.com

Dale Rahlfs - Chairman

Comerica Bank, Houston, TX
derahlfs@comerica.com

Jodie Sell

Coker United Methodist Church, San Antonio, TX
jodie.sell@coker.org

Chuck Thompson - Vice Chairman

U-Save Energy
cthomp005@gmail.com

Ann Williams, CPA

Houston, TX
awillcpa@yahoo.com

Your Marketing Reps

Ric Hobscheid, DFW, 817.320.3137

richobscheid@churchco-op.org

Mary Kaye McCoy, HOJ, 281.755.4147

marykayemccoy@churchco-op.org

Production

Design

Ernest Ideas Design & Media Group
Dallas, Texas 972.562.5380

Publisher

Dan Bishop
Houston, Texas, 281.531.5629

Managing Editor

Patti Malott
Houston, Texas, 281.531.5629

Editors

Cynthia Gustava
Sheila Townsend
Houston, Texas, 281.531.5629

Printer

Brodnax Printing
Dallas, Texas, 214.528.2622

COLOR

Your World with



Preferred Vendor of Choice for all your Copy, Print, Scan, and Fax needs.

Providing Service and Support for Houston and surrounding areas since 1954.

Specialized programs for Church CO+OP Members



FOR FURTHER INFORMATION CONTACT: TONY CHIOVITTI 832-867-5452 OR TCHIOVITTI@ABMTXAS.COM



SHARP SONY PHILIPS Panasonic DocuBox Fuji Xerox

American Business Machines, Inc. 7303 W. Sam Houston Parkway N Houston TX, 77040 O. 713-688-8873 F. 713-688-1162 URL: <http://www.abmtexas.com>

GEAR UP YOUR FANS FOR FALL SPORTS

100% Cotton Tees \$3.49
White short sleeve tees with a 2 Color imprint

Never Any Fees
Free Set Up
Free Artwork
Free Delivery

Contact us for great deals on all of your custom apparel needs - long sleeve tees, hoodies, sweatshirts & more!



1.800.365.5345
www.educationalproducts.com

Become a Member and Grow Together with the Foundation of Good Stewardship Resources ... the Church CO+OP

To Find out More About How to Become a Member, Turn to page 46.

20+ YEARS ...AND COUNTING
CHURCH SUPPLIES & SERVICES INC.



cleansweep

Going “Green” = Green

by Johnny Davis

New service offering: Assisting churches in dramatically lowering monthly solid waste cost.

In this day and age we hear more and more about “Going Green,” but is there something churches can reasonably initiate in order to “Green up” their facilities? Here’s the catch... We have often found that churches make “Going Green” an initiative. Yet without the support and well-designed program for their particular facility, good intentions far surpass “Green” expectations.

A quality waste management company understands the business of waste and recycling programs that can work for you, saving your church money in the process. Hence the phrase **Going “Green” = Green.**

A message from the President of USCG, a national waste management consulting company states: *What you don't know could cost you. The fact that most of what church facilities throw away is recyclable is not widely known. What's even less known about is once we have identified the need to recycle, how do we turn our facilities “Green” reasonably and efficiently?*

It Pays Churches to Contract a Waste Management Consulting Company

Imagine having a company pay you to hire them. A waste management consulting company pays its clients through manufactured savings and rebates. A consultant will offer a comprehensive savings plan through a collaboration of waste and recycling management programs. Whether you have a small or large church facility, a quality waste management consulting company can help you.

In today’s economic climate, organizations are seeking ways to reduce costs. By working with a consultant, it allows the pastors and administrators to focus more on the core needs of the membership.

A church solid waste and recycling management program absorbs administrative costs, while reducing costs and turning your facility “Green.” The consulting company and its staff become an extension of your organization.

Cost reduction programs are an integral part of a comprehensive waste management plan. A few goals include invoice review, as well as reducing solid waste costs by assisting in the complete development, management, and implementation of your church’s solid waste needs. The philosophy should be to reduce waste by increasing recycling.

Many generators of waste are not aware of the different waste classifications, collection methods, and/or new processes in the marketplace to capture and reduce waste costs.

A waste management company cost reduction procedure should include:

- An audit of your facility, waste stream and service providers.
- Design of a program and negotiation of rates with haulers.
- Reduced rate through negotiations, with a customized program designed for you. Recycling program should be included!
- The waste consultant is the architect that designs a program of lower monthly waste bills, tailored to fit your church’s specific needs.

Church Benefits – The program from beginning to end is designed to benefit your facility! At no out-of-pocket cost to your church, a quality waste consultant should give you...

- a reduced monthly waste bill
- a customized recycling program
- pre-negotiated reduced rates for extra pick-ups! (i.e. special events)
- billing management (optional) value-added service

Church Supplies and Services (CO+OP) is offering a waste management services consultant, The US Consulting Group.

USCG was brought to the CO+OP as a strategic partner of TES Energy Services, LP. Call Michael Bernstein at 972-447-0447, x105, to arrange for a review of your needs and potential benefits. +

Johnny Davis

Johnny Davis is an experienced solid waste and recycling sales rep for the US Consulting Group. Since 2001 he has assisted his father-in-law's ministry in Tulsa. It was only until a few years ago that he developed a direction that led him into helping organizations and churches help the environment. Johnny has since established a working knowledge of what it really means to "Go Green." He brings a broad knowledge of the different programs and abilities his company offers to organizations looking to save the environment and money.

24 HOUR EMERGENCY RESPONSE



Fire & Water Restoration

When disaster strikes, Blackmon Mooring is standing by to help. With a 24 Hour Emergency Response Center, 60 years of experience, and a caring team of professionals, you can count on us for rapid response and recovery.



TOLL FREE 24 HOURS
1.877.730.1948
www.blackmonmooring.com



Professional Janitorial Service of Houston

THE POWER OF ONE



FEATURING OUR **OS1** SYSTEM JANITORIAL SERVICE

The **ManageMen® (OS1) System** adopted by PJS is a simplified, bundled cleaning and safety program for large cleaning organizations. It is a comprehensive training, work loading and scheduling system that reduces cleaning costs while increasing efficiency, cleaning levels and morale.

PROFESSIONAL JANITORIAL SERVICE OF HOUSTON

JIM SHAW

2303 NANCE STREET, HOUSTON, TEXAS 77020

713.850.0287

ALLEN MCKEE

AUSTIN

512.447.0477

SCOTT O'BRIEN

HC SAN ANTONIO

210.824.3367

morepower^{to}you

Be Ready-Buy Smart

by Pat Teague, CEO, TES Energy Services, LP

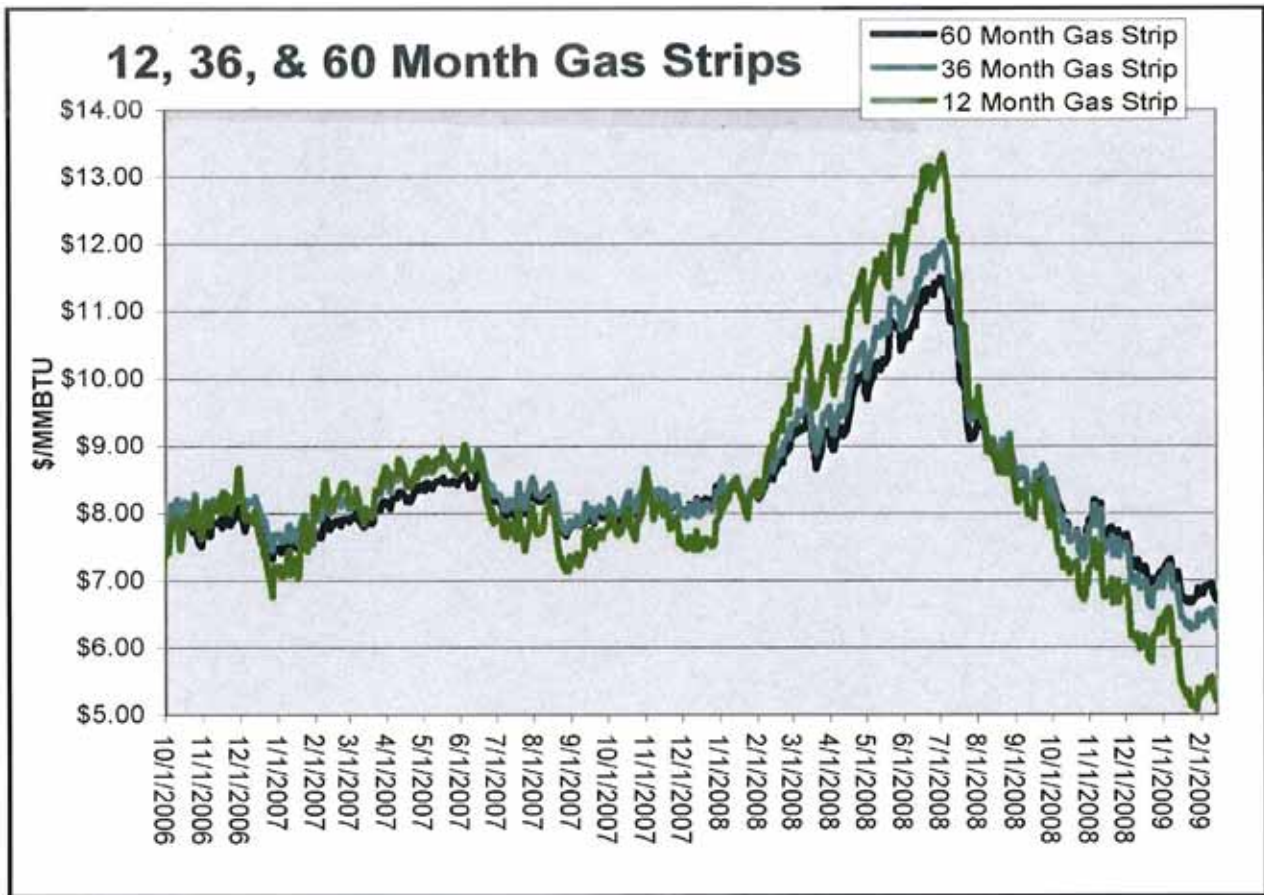
Hopefully, most people in Texas now realize that the electricity market is predicated on the natural gas commodity market, the fuel of choice for generations in Texas.

As deregulation started in 2001, natural gas was a cheap, viable fuel for the future, so Texas was the poster child of what competition would and could be. Through the next six years, because of weather, supply and demand, storage, hurricanes and the brisk economy of Texas, natural gas slowly rose, in a roller coaster manner, but steadily upward. As the price for gas rose, opportunities to purchase electricity were controlled by an individual's ability to monitor the natural gas market, taking advantage of periodic "dips" in an ever-changing market.

In December of 2007, natural gas had risen to around \$8 MMBTU and because of other variables, electricity was around 8 to 9.5 cents per kilowatt hour. In January 2008,

restrictions on the purchase of fuel commodities was changed, which allowed speculators and hedge funds to more heavily invest in this vital fuel. This started the rise of the price of natural gas to unprecedented levels. The standard line was that we were now in a world market and other parts of the world—China and India, in particular—were forcing up the cost and we could look for natural gas to continue to climb. The price peaked in July at an all-time high of around \$14 MMBTU and because of some congestion problems, Houston was experiencing electricity prices in the 20 cent per kilowatt hour range.

As July and August of 2008 rolled around and the speculators started to exit the market, and the influx of several new natural gas fields coming on line created an excess of fuel, natural gas prices started to trend back down. This brought about a decent reduction in the price one could get in the open market, but little did we know that this was only the beginning of the buying opportunities. As the November Presidential election was about to happen, the announcement of the economy heading for recession—maybe even a depression—was imminent, causing crude oil and natural gas to come crashing down.



These unpredictable events have created a rich environment of opportunity for the church community, as declining revenues and economic hardships have gripped the parishioners. Natural gas prices have almost returned to early deregulation prices. The “prompt” month pricing is in the low \$3 dollar range as of early March 2009, which gives the church community the opportunity to lock in for electricity prices close to levels not seen since 2003 to 2004. Church Pastors or Administrators, don’t hesitate. Contact your Church CO+OP sponsored electricity vendor today and “be ready-buy smart.”

See testimonial letter from Bear Valley Community Church to the right. +

Pat Teague

Pat Teague is CEO of TES Energy. You can contact him at 972.447.0447 or pat@tesenergyservices.com.

February 27, 2009

Michael,

I want to express my thanks for the fantastic job you did in saving our church money. We just signed up with the CO+OP on Wednesday, and by Friday, your company saved us over \$883.00 a month on just our electricity. I wished I had signed up with your company sooner. We are grateful for the speed at which you took our account and negotiated this great savings for us. I will tell every church I work with about the benefit of letting TES assist them.

Thanks you so much,

Julie Zuefeldt

Julie Zuefeldt
Financial Administrator
Bear Valley Community Church



Gerflor
Sports Flooring

(800) 544-8314
TEXAS-OKLAHOMA-NEW MEXICO

- Optimum safety
- Long life expectancy
- Ideal for sports, assemblies and banquets
- Over 300 million square feet installed worldwide
- 40% less installed cost than traditional wood
- Maintenance costs less than wood or VCT
- The longest wear warranty in the industry
- Two wood grain & fifteen color choices

Taraflex Sports Flooring

IT Fidelity
Truth in Technology

Comprehensive Information Technology Solutions

Increase reliability and performance while reducing your Information Technology expenses with **Managed Services!**

- Complete network and desktop management
- Web site design and application development
- Web site hosting and maintenance
- Hardware and software purchasing assistance
- Email hosting and spam filtering

Contact IT Fidelity today for a **FREE** assessment.
832.476.3188 www.itfidelity.com

Comfort Systems USA

ACCURATE AIR SYSTEMS
T A C L A 0 0 0 3 2 6 C / M P L 1 6 4 1 5

Additional services available: Leasing, financing, equipment audits, energy de-regulation assistance, extended warranties, and one (1) year parts and labor warranty on all service work.

PLUMBING COMMERCIAL & RESIDENTIAL

- Preventive Maintenance Agreements
- Plumbing Repairs and Replacements
- Hot Water Heater/Boiler Repairs and Replacements
- Water Softener Installation
- Toilet, Faucets, and Misc. Fixture Replacement
- Full Coverage Maintenance Agreements
- Back Flow Preventor Certified

REFRIGERATION

- Preventive Maintenance Agreements
- Refrigeration Repairs and Retrofits
- Refrigeration Equipment Installation

NEW CONSTRUCTION

- HVAC Equipment Installation
- Design Build
- Plans and Specifications
- Commercial
- Residential

HEATING/VENTILATION/AIR CONDITIONING (HVAC) SERVICE

- HVAC Unit Repairs and Replacement
- Preventive Maintenance Agreements
- Full Coverage Maintenance Agreements
- Air Balancing/Water Balancing
- Water Treatment
- UVC Lighting
- Coil Cleaning
- Duct Cleaning
- Variable Frequency Drives
- VAV Systems and Zoning
- Air Filtration Service
- Generac Brand Generators – Permanent Installation
- Controls/Automation Repairs and Retrofit
- Ductwork Repair and Replacement

LOCATIONS: Houston, 9745 Bent Oak Dr., (832) 590-5700 Dallas: (800) 388-1712

RENOVATE & GROW

Church Interiors of Texas
~ Enhancing Worship by Design ~

Save at least
20%
over Traditional
Contracting

Please visit www.churchinteriorsoftexas.com
for more information and photos.



After



Before

DeBow

Lock & Safe Company

281.398.6703

(FAX) 281.398.1422

Commercial
Master Key System
High Security Locks
Electric Lock Systems
Keyless Entry
Exit & Door Hardware
Desks & File Cabinets
Safes

Residential
Homes Opened
Locks Re Keyed & Repaired
New Locks Sold & Installed
Kick In Protection
High Security Locks
Lifetime Finish Hardware

Automotive
Opened
Re Keyed & Repaired
Ignitions Replaced
Foreign & Domestic

Bonded & Insured for
Your Protection

We recommend Mul-T-Lock



CREATIVE COFFEE

No Contract or Deposit

FREE Coffee Brewers

FREE Delivery (Metro)

Discount Prices

**Filtered water—
service & equip.**

Full Service

Wholesale

Equipment Rental



281.579.2224 www.CreativeCoffee.com

Terry Lappman, Account Representative

Fax: 281.579.0679 Email: creativeci@aol.com



Bea



zing Fruit

that Will Last

My father-in-law was an avid gardener – a physician by trade, but a farmer at heart. Each Fall, young and old alike would make the trek out to the vines that were heavily laden with the bounty of sweet, juicy grapes. One Fall, a few years after my father-in-law died, my husband and I walked back to the vines hopeful for the familiar taste and smell. But much to our dismay, the overgrown vines had become gnarled and barren, and what few grapes there were on the vines were small, dry, and bitter. Without the faithful tending of the loving gardener, the good fruit was gone and only the remnants of the vine remained.

By Beth Crissman





In many ways, the health or “success” of our ministries can be compared to my father-in-law’s grape vines. In both the Old and New Testaments, the people of God are described as a vineyard and the actions of the people described as the “fruit” they will bear. From this biblical precedent, we learn a critical lesson for the Church today: Only a well-tended vine will produce healthy fruit, and only a well-tended church will produce healthy ministries.

In our work with hundreds of churches and thousands of church leaders across denominational, state, and international lines, we have found that the health of a congregation determines the health of its ministries. Successful ministries do not simply happen. They are the result of intentional tending and nurturing on the part of its leaders –all under the loving and faithful care of God, the Gardener. So, let’s take a closer look at two primary scriptures in Matthew 13: 1-9 and John 15: 1-17 to understand more fully what kind of tending is needed to bear fruit that will last for the sake of the Kingdom of God.

Tending the Soul of the Church

Any gardener will tell you that the health of the soil affects the quantity and the quality of the produce. In Matthew 13: 1-9, Jesus tells us the parable of the four soils. From this parable, we learn that the well-prepared and tended soil produced 30, 60, even 100 times more than was ever hoped for or possibly imagined! But what was it that made the soil able to produce? The key is in the state of the soil – or in our case, the soul of the church.

First, we learn that if the soil – or the soul – becomes hardened, the seed of God’s promise cannot take root. In many churches today, we have become discouraged and dismayed by our setting and circumstances, and the resulting cynicism has hardened our hearts. As a result, we spend too much time and energy focusing on the failures and frustrations of the past instead of focusing forward on God’s promising future.

Another way in which the soul of the church becomes hardened is when we fall into the trap of our traditions instead of trusting God to do a new thing. Instead of letting our traditions (which are shaped by what we have done) define our ministries, we should be ministering BY FAITH in what GOD can and will do through us. Our history and traditions can inform us, but we must remain open to allow God’s Spirit to transform us to do a new thing, in a new time, according to God’s will.

Breaking through our Differences

Jesus also teaches us that the seed of God’s promise must fall on well-tilled soil. Too often in our churches, we try to

“plant” a vision in the midst of unresolved hurt and conflict. As a result, new ministries sometimes spring up quickly, but as soon as someone voices opposition –and things get “hot” – the ministries “wither and die.” When we are unable to respond in healthy ways to differences among us, we spend more time pulling up and uprooting ministries than allowing them to take root and receive the proper nourishment they need to flourish on their own.

Conflict is natural and inevitable in every church and in every ministry. Proper tending of the soul of the church requires being able to navigate through our differences in ways that build up, and never tear down, our relationships and ministries together. When we are able to break through the rocky soil of our hurts and differences, the seed of God’s promise and a renewed vision for our ministry can be firmly planted so that our roots go down deep into him and draw up nourishment from him so we can grow in faith, strong and vigorous in the truth we were taught (Colossians 3:7).

Weeding out the “Good things”

Jesus also teaches us that the well-tended soil must be free of thistles and weeds. God’s plans and intentions are often “crowded out” by the fast pace of our personal lives and ministries. In many of our churches, we are doing lots of good things, but we can’t get to the “God-things” we have been uniquely called to do. Why? Because we are convinced we don’t have enough time, money, people, or energy.

To ensure that we are able to get to the “God-things,” we have to be willing to give up some “good things.” This weeding out requires an intentional process of discerning God’s purpose and vision for our ministries. Both in our personal lives and in our churches, the bondage of our hectic life can choke out the produce of the promise God has in store for us. But the weeding out is often up to us. We must choose to let go of some “good things” (and even some “bad things!”) to focus on the “God-things” we are specifically called to do.

Staying Connected to the Vine

During his three years of ministry on Earth, Jesus did amazing “God-things” that shaped the Kingdom work his followers were to continue. To help us understand the nature of this ministry, Jesus said in John 15: I am the vine; you are the branches. Those who remain in me, and I in them, will produce much fruit. For apart from me you can do nothing (John 15:5 New Living Translation). From this scripture, we learn several additional lessons about the tending that is needed to bear fruit for the Kingdom of God.

Corporate Branding, Ministry Outreach, Church Identity

Communicate

**A Compass for Purpose,
a Spark for Creation,
and a Messenger for Your Vision.**

Call Today to Begin Communicating!

www.ErnestIdeas.com
Ernest+Ideas
Design & Media Group

1.877.886.2821 2851 CRAIG DRIVE, SUITE 300
MCKINNEY, TEXAS 75070

INTEGRITY

FURNITURE

Quality **VIRCO** Furniture
At Affordable Prices.

Call for complete catalog

INTEGRITY also carries the following:

- Bulletin Boards
- Marker Boards
- Chalk Boards
- Risers
- MityLite Tables
- Portable Staging
- Flags (U.S. & Foreign)
- Worship Seating
- Storage Equipment
- Lecterns/Podiums
- Children’s Furniture
- And more

TOLL FREE: 1-888-600-8639

FAX: 1-903-663-2040
E-mail: sales@integrityfurniture.com
www.integrityfurniture.com

NEW PRODUCT FEATURE BROUGHT TO YOU BY YOUR CHURCH CO+OP!

Save up to **60%** on Your Current Outreach Marketing and Increase Your New Visitors up to **82%**!



**Tell People
You Know™**

Please Visit www.TellPeopleYouKnow.com for More Information.

© 2008 Editability Publishing. All Rights Reserved. 82% Statistical Data Based on Research by Thom Rainer "The Unchurched Next Door: Understanding Faith Stages as Keys to Sharing Your Faith".

CO+OP Works...

Member Organizations and Member Vendors
working together to achieve great stewardship.

Contact us today to become a member.
Tap into the savings available for you.

Call
888.350.3264
www.churchco-op.org

Since 1988, Churches Helping Churches



**Reliable
Productive
Cost Effective
Printing Solutions**

**Envelopes, Postcards
Newsletters, Direct
Mail and much more...**

**Dallas Area
RISO Inc.**
2081 Hutton Drive, Suite 208
Carrollton, TX 75006
972 481-8750
Michael Samson
msamson@riso.com

***Your church's High speed,
Low cost, Full color printer
provider***

**Houston Area
RISO Inc.**
3120 Rogerdale, Suite 100
Houston, TX 77042
713 782-5080
Kurt Gilbert
kgilbert@riso.com

**Color copies/prints:
Less than 3 cents per
page**

**Monochrome
copies/prints:
Less than 1 cents per
page**



First, Jesus makes it very clear that to do the “God-things” or Kingdom work, we must remain connected to him. Of all the tending tasks, this may be the most basic and the most essential. To be a healthy church that produces healthy ministries, we must first have a healthy connection with God. In John 15, Jesus uses the vine and the branches to illustrate the importance of our relationships to our ministry. God (the Gardener) sent Jesus (the Vine) to which the believers (the branches) are connected and through which the mighty works and wonders of God are performed (producing fruit that will last).

Jesus makes it very clear that if we sever, or part, from him, we can do nothing! Whenever we try to do ministry by our own might or in our own way, we may be capable of doing lots of “good things,” but we will fall short of the “God-things” we are called to do. Therefore our relationship and connection with Jesus Christ is essential in producing the fruit – or ministries – that will last. Additionally, Jesus warns us that if we operate outside of our love for Jesus and one another, we threaten the integrity of the connection and our ability to bear fruit. In fact, Jesus tells us that if we sever these relationships, we might as well be thrown away like a useless branch and be gathered into a pile to be burned (John 15:6).

Pruning for Greater Fruitfulness

In John 15, Jesus also reminds us of another essential tending task: pruning. However, we do not prune ourselves or each other. God is the Gardener, and God does the pruning. In John 15:2, Jesus says: He cuts off every branch that doesn't produce fruit, and he prunes the branches that do bear fruit so they will produce even more. The sole purpose of pruning is to allow the branches to bear more fruit – to take away that which is depleting the healthy branches from the essential nourishment they need. But what and how does God prune us? We must allow God to prune away behaviors and attitudes that threaten the integrity of our relationships and ministries together. Or we might ask God to prune away the “good things” that are depleting our resources so the “God-things” can be produced instead.

Only healthy churches can produce healthy ministries, and the health of a church is the result of intentional tending by its leaders. If left unattended, our churches will ultimately become gnarled and barren with only dry, bitter fruit remaining. But under the faithful tending of our leaders and the loving pruning of the Gardener, our churches can and will produce fruit – much fruit – that will bring great glory to the Father. ✚

Beth Crissman

Rev. Beth M. Crissman, and her husband Rev. Kelly Crissman, are ordained elders in the United Methodist Church, and co-founders and executive directors of Plowpoint, Inc., a non-profit ministry committed to breaking ground for the seed of the Gospel through ministries that prepare and repair the Church and church leaders. Beth is the author of three books: *Longing to Belong* (transforming conflict); *Stepping in the Stream* (biblical visioning); and *Feeding and Leading of Shepherds* (reclaiming the biblical call as shepherd leaders among God's people).

For more information on strengthening your congregation's leaders and ministries, visit Plowpoint at: www.plowpoint.org.





Fruits

9 Let us not become weary in doing good, for at the proper time we will reap a harvest if we do not give up. 10 Therefore, as we have opportunity, let us do good to all people, especially to those who belong to the family of believers.

(NIV) Galatians 5:9-10

of the Vine

by Michael Euliss

What Do You See Blooming this Spring?

Each Spring I am reminded of a hymn written by Natalie Sleeth that goes:

*"In the bulb, there is a flower; In the seed an apple tree;
In cocoons, a hidden promise: Butterflies will soon be free!
In the cold and snow of winter There's a Spring that waits to be,
Unrevealed until its season, Something God alone can see."*

It is in this season that our mind turns to flowers, things blooming, working in the yard, and seeing what winter has kept hidden. Children think of getting out of school and waiting for community pools to open. Farmers look upon fields wondering what the harvest will be this year. I wonder if God looks at us with the same hope. His word is pretty clear. We are to produce fruit. The illustration of fruit can take many meanings; from the various types of ministries, to the many ways we show love for one another. The end result is that he wants us to make disciples. He is also clear that separated from Him, we cannot produce fruit like branches separated from the vine. As a body of believers in today's busy world, it is easy to become separated from the vine. We get so caught up doing good things, we never get to the great things. Or to put it another way, we never get to the God things. Are we so caught up in "doing church" that we many times fail to "be the church?" How can this be?

Well, it happens...even to the best of us. Sometimes it starts with a little argument over what color carpet is to be used in a certain room of the church and it escalates from there. Or, it may be a lack of visioning by the leadership, allowing the ministry to go in many good directions, while never discerning the call from God for a more targeted ministry. Or it could be in allowing the same 20% of the people to do 80% of the work when all were created in his image.

Yes, I know, it's easier that way. But not to the other 80%. Let's look at it statistically. Barna Research shows that over the last few years, an average of about 24% of people volunteer in their church on a regular basis. Gallup research shows that 29% of all members fall into a category they call "Engaged." That is, they have a strong psychological connection to the church and feel a true sense of belonging, thus serving and giving more. When asked to chart their church on spiritual growth on a scale from 1 to 10, most pastors put their congregation at 3. Why is that? It all boils down to leadership.

When polled, church members say they need leadership that does many things. Motivating people, casting vision, and making

plans were among those. But about 75% say that they need a leader that develops other leaders. When it comes to that, many ministries today, like the farmer, look with watchful eyes that something will begin to sprout this spring only to remember they forgot to plant anything.

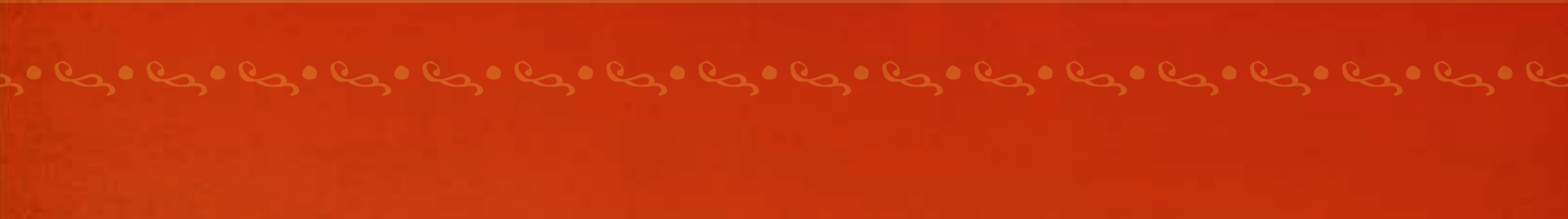
I grew up in a small town in North Carolina, and my father had a grape vine that bordered the yard in the back. I say it was his because of the way he protected it. He shared the fruit, but he was the gardener and caretaker. We had an apple tree, a plum tree and a pear tree as well, but the grape vine was always his favorite. He grew three types of grapes and cared for the vine like it was a baby. One year for Father's Day, we bought him a scuppernong vine which he placed in the middle and became his favorite. For those of you who are not familiar with the term scuppernong, it is a type of grape in the muscadine family, a native grape of North Carolina. Each year we could not wait until the grapes were ripe and ready to enjoy. There were a couple of lessons that I learned from that experience:

1. Grapes picked too early are not good to eat.
2. Grapes picked too late are raisins.
3. If you are not the gardener, do not prune the vine. It may cause it to die, thus producing no fruit.

As I was doing research for this article, I discovered that there are more than 8,000 varieties of grapes. Many of them have different purposes and are harvested at different times of the year. Most grape vines after planting take between 3 and 5 years to produce a full harvest, which means a lot of planning must take place to prepare the vines.

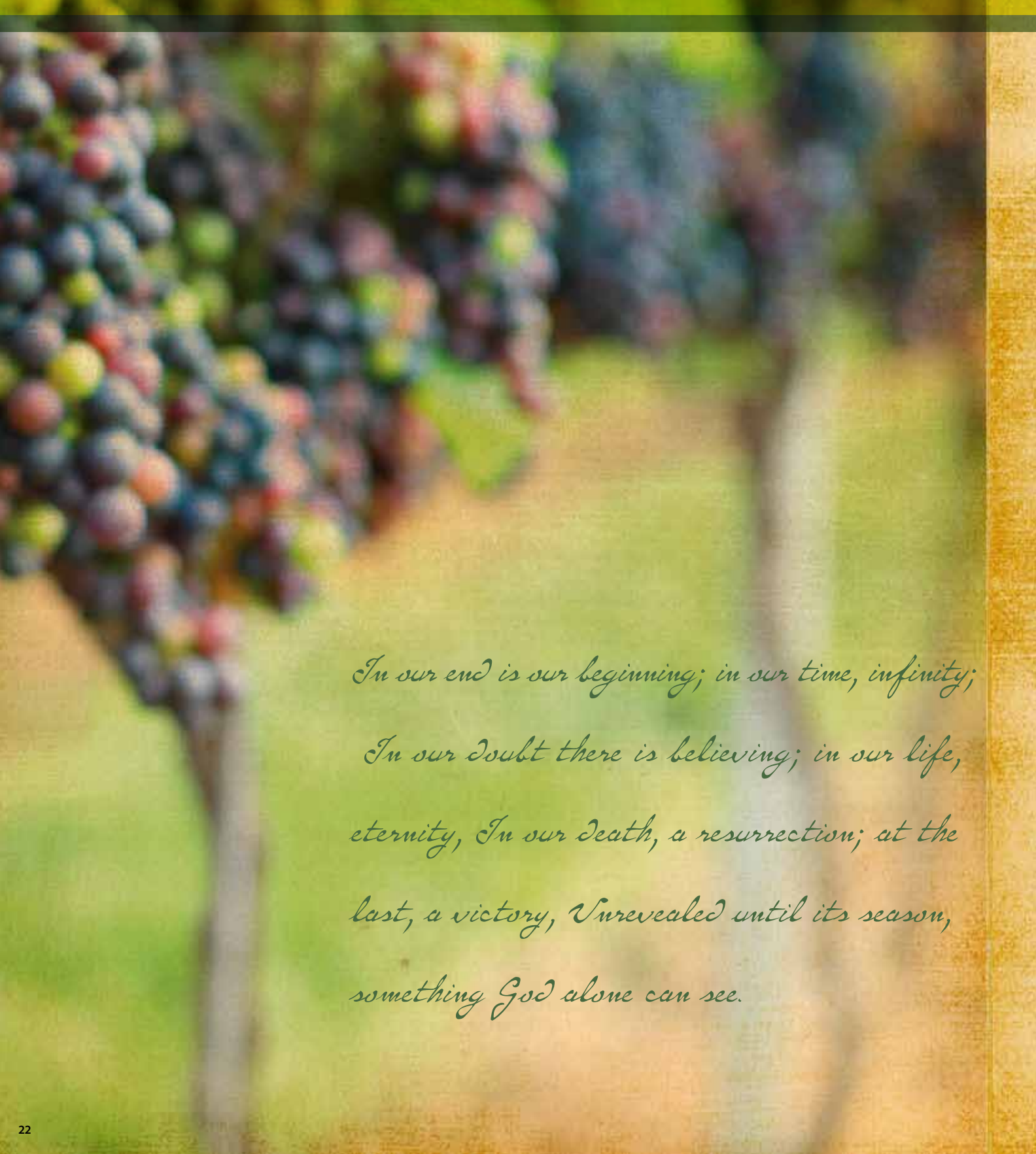
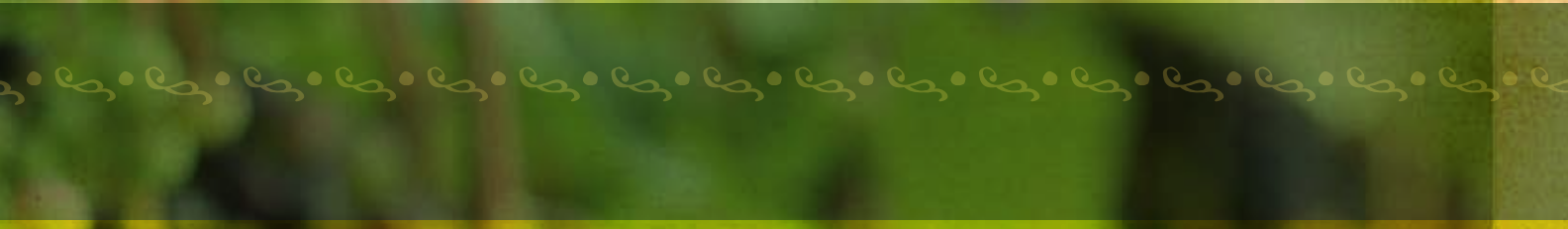
It is an easy step to see the parallel between the vine and our people. How many different types of people reside in your congregation? And all of them were created in His image? Many do take gentle care and some require "babying" to help them to their full potential. That is to be expected. And the most important lesson? It takes time for them to reach their full potential. Some take more time than others. And that, like the vine, requires careful planning.

Let's look at the harvest potential. Dr. Al Winseman says in his book, *Growing an Engaged Church*, Gallup's research revealed that 29% of members in congregations are engaged while 54% were "not engaged," and 17% are actively disengaged. "Not engaged" people make up the group that we need to sit up and take notice of. These members may attend regularly, but



*"In the bulb, there is a flower; In the seed
an apple tree; In cocoons, a hidden promise:
Butterflies will soon be free! In the cold and
snow of winter There's a Spring that waits to
be, Unrevealed until its season, Something God
alone can see."*





*In our end is our beginning; in our time, infinity;
In our doubt there is believing; in our life,
eternity, In our death, a resurrection; at the
last, a victory, Unrevealed until its season,
something God alone can see.*

they are not psychologically connected to the congregation. Their connection to the church is more social than spiritual. These people are the easiest to excite and get on board with a vision. However, these are also the people that are most likely to leave, searching for something they are not finding where they are...spiritual growth. That means that over half of the average congregation is just looking for a way to bloom. Remember, if you start now, you will see some fruit quickly, but you must continue to develop these people as disciples if they are to reach their full harvest.

How do we accomplish such a large task? Let's go back to the vine. Experts in grapes tell us the following things are important:

1. **Choose the right plant for your area.** Translation: Understand clearly your vision and mission so that as a person becomes spiritually mature, their gifts and talents can be put to use in a direction they see as significant.
2. **Prepare the soil.** Translation: Have a plan for the development of your people that does not center around one person. Make sure your plan empowers others to train and develop those around them. Remember, a person who develops others adds—but a person who develops other leaders multiplies. Use proven methods of measuring progress. Then share and celebrate your progress.
3. **Plant and train the vines.** Part of training vines involves creating a structure for success, like a trellis, and nurturing the plant so it develops a healthy root system. Translation: Your people need a structure to understand what is expected of them, an environment where they can make mistakes while growing strong in God. Consider a Sunday school or small group environment not full of electives, but carefully planned steps for spiritual growth.
4. **Control pests.** It goes without saying that anyone growing grapes would want to watch for pests like the grape berry moth. Uncontrolled, infested berries may appear shriveled with fine webbing. Damage by the grape berry moth may increase mold, rots and numbers of fruit flies. Translation: Be watchful as you create leaders that they not become micro-managers. In our zeal to become excellent in our service to God, many people become critical, making those under them shrivel up. The other type of "pest" is what Winseman refers to as CAVE dwellers. That is, people who are Consistently Against Virtually Everything. These people need love just like

the rest of us. There may be a very good reason why they are against most things. Use it as a ministry opportunity and find out. Look for innovative ways to help them grow spiritually.

Remember God is the master gardener. He and He alone does the pruning. We are called to love each other as ourselves. Encouraging one another and creating disciples. As a person becomes a true disciple, God will handle the pruning. The person that you see as the biggest pest may be the one in need of the most love.

So as you look to this year's harvest, what do you see blooming? Are you just beginning your journey of building leaders or is this your year for a bountiful harvest? One thing is certain; it won't happen by accident and will require a lot of time and care to do it right. At times the going may be rough, but don't quit. God's word says if we do not give up, when the time is right, we will reap the harvest. For now, it may just be something God alone can see.

Hymn of Promise by Natalie A. Sleeth,

*In the bulb there is a flower; in the seed, an apple tree;
In cocoons, a hidden promise: butterflies will soon be free!
In the cold and snow of winter there's a spring that waits to be,
Unrevealed until its season, something God alone can see.
There's a song in every silence, seeking word and melody;
There's a dawn in every darkness, bringing hope to you and me.
From the past will come the future; what it holds, a mystery,
Unrevealed until its season, something God alone can see.
In our end is our beginning; in our time, infinity;
In our doubt there is believing; in our life, eternity,
In our death, a resurrection; at the last, a victory,
Unrevealed until its season, something God alone can see.*

May God richly bless your efforts to grow Kingdom leaders during this and every harvest season. ✚

Michael Euliss



Michael Euliss is president and founder of Euliss Consulting Group, a ministry to help churches with various discipleship strategies. He is also a certified congregational health specialist and a Gallup Certified Field Faith Advisor. He can be reached at www.euliss.com.

Hymn of Promise © 1986 Hope Publishing Company
Carol Stream, Ill 60188
All Rights Reserved – Used by Permission

Conference Recap



Together We Serve...

February 19, 2009

"Very courteous people & friendly; good food & very informative."

– Betty Nowlin Johnson
Church Secretary
Oliver Chapel Baptist Church

"Atmosphere, excitement, expectation – vendor displays were impressive."

– Mary McGinnis
Office Manager
Houston First Church of the Nazarene



2009

To Those Who Made The Staff Conference Possible:

For the third straight year, our evaluations from participants reflected high ratings and very positive comments regarding the gracious hospitality everyone experienced at Champion Forest Baptist Church. The positive ratings would not have been possible without our dedicated team of volunteers.

Thank you, Champion Forest, for graciously agreeing several months ago to host our event—knowing you would be in the middle of a multi-million dollar expansion project. You continued to work with us insuring our technical, custodial, facility and media needs were met. Thank you for this partnering relationship.

A big hats off to the volunteer “red vests” who greeted us, helped with the food tables, led speakers and attendees to their classrooms, and made sure all were welcomed on Conference Day. Many of you stayed the entire day and helped with the cleanup.

Thank you, custodial, media, and technical staff of Champion Forest, who covered the many details to make sure there were no distractions that kept us from learning. Your long hours during the days leading up to and the day of the event to make sure every room was ready and well-equipped for learning did not go unnoticed.

We are grateful for the group of volunteers from various churches (and red vests) who gathered prior to the conference to stuff the 565+ packets for attendees, speakers, and exhibitors. Due to such a great turnout of volunteers, we were able to complete the stuffing this year within 1.5 hours.

Thank you “Registration Volunteers” who helped process 565 attendees, speakers, and vendors for the day. You made the process go smoothly and quickly.

Each year God has His ways of providing a special number of individuals to help with various last minute tasks. Thank you, Bob Fox, for donating several days of your time to making phone calls to churches and for preparing each of the table decorations. Thank you to Randy Otts, Kevin Conrad, Judy Ingvarlsen, Paula Burns and the many others for helping set up and tear down.

As with any event, the safety of people is of high importance. We appreciate so much the servant spirit of John Malott, who each year takes vacation time from HPD to serve as our Security Officer. Thank you, John, for your faithfulness in keeping us safe and secure throughout this event.

Last, but not least, I want to thank all of you who are not mentioned in this letter. It takes such a huge team of people to produce a conference and many of you are “behind the scene” servants who faithfully serve as needed. We appreciate each of you!

Thank you—all of you—for making the theme “Together We Serve” alive and real as we indeed serve God together.

With Much Appreciation,

Patti Malott
Conference Producer

Together
We Build...

2.18.10



Fruit Grows in Unexpected Places

The President of Hyatt Hotels once said, "Ninety-nine percent of all employees want to do a good job. How they perform is simply a reflection of the one for whom they work." This quote couldn't be more fitting for the Maintenance and Custodial staff at Champion Forest Baptist Church.

After receiving such positive feedback from evaluations of our staff conference in February, I realized this was the third straight year we had received such comments. Curiosity got the best of me and I made an appointment to interview Randy Barnett, Facilities Manager, and his assistant, Scott LeCroy.

What makes this venue and staff so unique? Let me share with you some of the interview that took place on a Sunday morning and you will know.

by Patti Malott





Patti

Randy, I know your title is Facilities Manager, but that means different things from church to church. What exactly is your role?



Randy

My role as Facilities Manager means that I am responsible for the entire plant—including over 400,000 square feet of facilities and a whole team of employees.



Patti

You mentioned a team of employees. How big is that team?



Randy

We have thirteen (13) full-time and twelve (12) part-time working in custodial and maintenance.



Patti

What brought you to Champion Forest?



Randy

I told God years ago that I would never live in Houston. In 1980, I was asked to move here from Phoenix and become Champion Forest's Facility Manager. Since I was not interested and thought it was a waste of ministry dollars to fly me here, I turned down the offer to come.

The administrator at the time said, "It's never a waste of money to verify God's Will." So he flew me and my wife out here for a weekend. We accepted the call and have been here for 29 years. My desire has always been to be in God's Will. Before Champion Forest, I served two other churches.



Patti

And Scott, your role is?



I am the assistant to Randy. I was in the oil field industry and attending this church with my wife, who was a member. I knew I wanted to serve here. I submitted an application and called Randy each month for a year until he called me in and hired me. I wasn't interested in the money. I just knew I wanted to serve at CFBC. I was hired at the bottom and now I am Randy's assistant.



Scott

For the past three years, you have agreed to host the staff conference on the third Thursday of February. That is back-to-back with a huge event called "Freedom Weekend," which means you have over 4,000 people moving in immediately after our event. Doesn't that take a toll on your staff?



Patti

This is not out of the ordinary. We run crews 24/7 because we support the ministry and are here to make sure the facilities are ready.



Scott

What keeps you here, Scott? Surely you must grow weary of continually doing the same thing over and over again.



Patti

I am here because I love serving. And I really enjoy working with Randy. He is a fair supervisor and he's very supportive of his team. I also enjoy helping people.



Scott

We engrain in our staff that what we do is ministry. We teach them to do what is asked and accommodate people. If it is something that needs addressing, we will do it later. But they are to accommodate requests, and are used to supporting the ministries. This is the best team we have ever had.



Randy

Randy, it is evident that you enjoy helping people, too, and making sure those who attend any event at CFBC feel welcome. You never seem to be too busy for people and the facilities always look prepared.



Patti





That is my desire at all times. I have attended several conferences at other churches and didn't feel welcomed by the staff. I never want that to happen here. We work hard at making sure there are no distractions to prevent people from hearing God's Word.

Randy



You are known to graciously help other churches and non-profits.

Patti



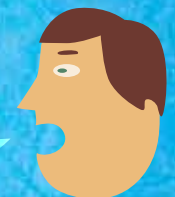
I enjoy helping people. It's all about ministry. I also enjoy serving on the board of the CO+OP, because it is all about churches helping churches. The CO+OP is a great ministry to our church as well. The conference allows our staff to have a change in routine. Many of the staff attend the conference, and feel that it is full of valuable resources for them.

Randy



Scott told me about your support to him and the team you lead, Randy. With a church this size, what kind of support do you get from the senior pastor?

Patti



Pastor Fleming goes out of his way to praise my team and we appreciate his encouragement. He knows and talks to each team member. With a staff this size—that's intentional ministry.

Randy



Randy and Scott, I thank you for taking the time to share a little about your role and perspective on ministry. What a blessing it is to see and experience the fruit of your service, because of your love for Christ and His Kingdom.

Patti

As leaders and coaches, Randy and Scott have taken the responsibility and opportunity to be role models to the custodians and maintenance staff of CFBC. Because their desire is to serve the Lord by serving others, their attitude is contagious among their staff...bringing unity and a strong team spirit among them.

When custodians and maintenance personnel view their role as a ministry, and not just as a job, they recognize their role in fulfilling the mission and vision of the church and will view people as their most appreciable asset. For this team, they have learned the true meaning of success.

Colossians 3:23 says, "And whatsoever ye do, do it heartily, as unto the Lord and not unto men." Randy's team has learned the true meaning of that verse and the fruit keeps growing in unexpected places. ✦

Patti Malott

Patti Malott is founder and president of Upright Ministries, a national organization whose mission is to enhance and protect ministries by safeguarding people and streamlining processes. You can contact Patti at 281.797.8619 or patti@uprightministries.com.





REPAIR & MAINTENANCE
ALL TYPES ROOFING SYSTEMS
(EXAMPLE-METAL, BUILT-UP-ROOFING, ETC.)

RE-ROOFING & RETRO-FITTING
SHEETMETAL DESIGN & FABRICATION
METAL ROOFING REPAIRS & COATING
SURVEY & COST PROJECTION

FOR ALL YOUR ROOFING AND
WATERPROOFING NEEDS!



CALL
MARK D CARLSON
281-374-7657



Upright

MINISTRIES



*We
Protect,
so You
can Serve.*

With more than 25 years
experience in Ministry
management, let us help
you with...

- Facility Management & Risk Assessment
- Financial Policies & Procedures Assessment
- Training to Reduce the Risk of Child Sexual Abuse
- Insurance Review
- Personnel Consulting

281.797.8619 | www.UprightMinistries.com

Winner of the 2007
FastTech 50 and
Fast 100 Awards!

Exclusive Telephone System Vendor
of the Houston Church COOP



DataVox

www.datavox.net



CISCO AVAYA TOSHIBA INterra

- **Telephone Systems**
- **System Integration**
- **Network Security**
- **Computer Telephony Software**
- **IP Telephony**
- **Structured cabling**

For more information or to inquire about your future telephone
solution, please visit us online at www.datavox.net or contact
Neil Ferguson, VP of Marketing at 713-881-7107

DataVox, Inc. 2000 W. Sam Houston Parkway S., 9th Flr., Houston TX 77042 **713.881.7407**



A person is kneeling in prayer, their hands raised towards a vibrant sunset sky. The sky is filled with warm colors of orange, red, and yellow, with rays of light breaking through the clouds. The text 'Worship In All Aspects of Life' is overlaid on the image in a large, bold, sans-serif font. The words 'Worship', 'In All', and 'of Life' are in a reddish-orange color, while 'Aspects' is in a bright yellow color. The person's silhouette is in the lower-left corner, facing right.

Worship In All Aspects of Life

By Brent Johnson

Growing up in a Christian home, I was in church every time the doors were open. My favorite Bible verse became Psalm 122:1... "I was glad when they said to me, 'Let us go into the house of the Lord'" (NAS). Every week, I went to the "worship service" and I knew that was where Christians came together to worship God. In high school, my youth group leaders bought some Praise and Worship music and we would sit around in a circle with candles and sing new praise songs to God. In college, we started calling our Minister of Music the "Worship Leader". He would talk about his passion to lead our praise during our services.

These are the experiences that shaped my understanding of what I thought worshipping God entailed; a Sunday event that centered around music. Then, while reading through the Bible, I realized nearly always when "worship" was mentioned, it rarely involved music; but rather bowing down and sacrifice. This was very different from the worship I knew. I began to wonder if my worship involved humility or if it cost me anything. I realized that music in itself was not wrong worship, but only a part of worship. Worship is more than what "tradition" had taught me growing up in the church. God launched me



on a journey, which continues today, to expand my mind's view of the most important thing I can do in all of life—worship God.

Worship literally means to ascribe glory and honor, to bow down in reverence. We get our English word “worship” from the old English word “weorpscipe,” which means to show worth and respect. Certainly music is a great way to express how I feel about God and I am glad for the opportunity. But now, I realize I should put action to my words after the song is over, when the service is complete. When I am at home watching TV, when I am at school presenting a book report, when I am at work finishing a project, are my actions displaying worship?

We were created to worship. We know from Genesis that God created everything, but Colossians 1:16 reveals why we were created: “...all things have been created by Him and for Him.” Wow! That is the answer to the age-old questions, “What is my purpose in life; why do I exist?” The answer is surprisingly simple: worship our Creator. We are created to say, sing and bring honor to God; we are made to worship.

We are redeemed to worship. In sin, separated from God, we are unable to fulfill our life purpose. 1 Peter 2:9 tells us that Christians are called out of darkness (sin) and into God's marvelous light so that we can “proclaim the excellencies of Him.” God went to great lengths to atone for our sins as the spotless Lamb of God was sent to be sacrificed so that we can tell of His greatness. This shows how important it is to God that we worship Him.

We will worship in Heaven. Revelation 4 shows us a glimpse of what is happening in Heaven all of the time and what those of us who are in Christ have to look forward. John describes four beasts that do not cease to say (notice they are not singing), “Holy, Holy, Holy is the Lord God, the Almighty, who was and who is and who is to come.” (Revelation 4:8). And when this happens, there are twenty-four elders who take postures of humility, cast down their crowns and say, “Worthy art Thou, our Lord and our God, to receive glory and honor and power; for Thou didst create all things, and because of Thy will they existed and were created.” (Revelation 4:11) This is a dynamic picture of praise that I do not see very often.

We were created to worship

NACBA

2009 Meetings

Alamo Chapter – San Antonio

Meeting on the third Thursday of each month at 11:30 a.m.
Contact: Jodie Sell, 210-494-3455, x231
jodie.sell@coker.org
www.nacbaalamo.org

Capital Chapter – Austin

Meeting on the second Thursday of each month at 12 noon.
Contact: Mollie DeVries, 512-255-3322
mdevries@palmvalleylutheranchurch.org

Dallas Chapter

Meeting on the third Tuesday of each month in South Dallas at 11:30 a.m., and the third Thursday of each month in North Dallas at 11:30 a.m.
Contact: Dave Roberson, 972-423-4506
droberon@firstmethodistplano.org
www.nacbadallas.org

Fort Worth Chapter

Meeting on the third Thursday of each month, time varies.
Contact: Vicki Morgan, 817-326-4693
vmorgan@actonbaptist.org

Houston Metro Chapter

Meeting on the third Thursday of each month at 11:30 a.m.
Contact: Kay Irvine, 281-353-4413
kay@churchthatcares.org
www.nacbahouston.org

North Houston Metro Chapter

Meeting on the second Thursday of each month at 11:30 a.m.
Contact: Margie Serio, 936-521-1673
margie.serio@wcbc.us

For more information on a Chapter meeting in your area, visit the NACBA website, www.nacba.net



take
action
to
worship
in all
ways

Christians are created, saved and destined to worship God, but not just on Sundays. The Bible clearly shows that God's desire is for Christians to fulfill their purpose while engaged in all aspects of life. 1 Corinthians 10:31 says, "Whether, then, you eat or drink or whatever you do, do all to the glory of God." Even in something as mundane as eating and drinking, we are to worship God. This is more than saying a prayer before a meal; God says "Worship Me" in absolutely everything you do.

We are so attuned to associating worship with Sundays and music that we are likely to make comments like, "Jack was worshipping so great in church today. You could really see it in his face." No offense to Jack, but it is easy to worship well in the company of others gathered to do the same thing. In contrast, would it be better to assess one's worship outside the church walls? "Man, did you see Jack talking to the waiter at his table about how God has changed his life? He was really into worship today."

So, how does a Christian worship in everyday life? I would offer some suggestions. First, know whom you worship. What says "I honor you" more than earnestly seeking to know someone? When I was dating my wife, Holly, I wanted to know everything about her, so I studied her and asked her friends about her character and what she liked to do. God reveals Himself in His Word and the first way to worship is to read the Bible daily. When you grow in your walk with Him, you worship Him.

Second, obey whom you worship. I have twin six-year-old girls and I love it when I tell them to do something and their response is, "Yes, Daddy." Then I love to watch them do what I asked! If they do not do it exactly, I am fine with helping

them get it right. As a father, I love this interaction with my children and thus I have learned that God loves to interact with His children. In 1 Samuel 15:22, we see that to obey is better than to participate in ritualistic services of worship. It is not that the latter is bad; it is just that worship is so much more.

Third, sacrifice to whom you worship. What is sacrifice? To give up something that is significant. King David was commanded to sacrifice in 2 Samuel 24. A man offered to give David, his king, the wood and oxen for the sacrifice. But David refused and explained, "I will not offer burnt offerings to the Lord my God which cost me nothing." How often do we come to worship, in church or otherwise, and do it without cost of time, effort, etc.?

In conclusion, I challenge you to grab a pen and jot down several things you will do tomorrow. How can you ascribe glory and honor to God in each of those things? This exercise may not seem easy, but remember, while doing it you are worshipping God as you think about Him. Once you have thought it through, take action to worship always in all ways. ✦

Brent Johnson



Brent is the Associate Pastor of Discipleship, Evangelism and Pastoral Care at Faith Family Baptist Church in Kingwood, Texas. He has a Bachelor of Arts in Speech Communication from Baylor University and a Masters of Divinity with Biblical Languages from Southwestern Baptist Theological Seminary. Brent lives in Houston, Texas with his wife and twin daughters. You can reach Brent at bjohnson@faithfbc.org.





BREAKROOM

KEURIG SINGLE-CUP BREWERS

GREAT TASTING COFFEE, ONE CUP AT A TIME

KEURIG® B140 BREWING SYSTEM

Perfect for an office of 15 or fewer employees, conference rooms or the boardroom. With its small, sleek design, the B140 fits almost anywhere, complementing the décor of your workplace, breakroom or conference room.

Key Features:

B140 Small Office Brewer

- Three brew sizes – 6, 8 and 10 oz.
- Internal tank drains at a flip of a switch

Key Features (continued):

- Auto-off, automatically turns off after two hours
- Water reservoir holds 48 oz.
- Travel-mug friendly
- Pour-over water fill, removable water tank
- Very neat and clean – requires almost no maintenance
- Removable, dishwasher safe drip tray
- CUL and UL approved for commercial use
- Size 13.5" H x 11" D x 8.5" W, 14 lbs. (empty)



KEURIG® B200 BREWING SYSTEM

A very versatile office brewer – designed for medium size offices with up to 30 employees. Its unique LCD screen provides user instructions. The B200 can be used in pour-over or plumbed mode for maximum placement flexibility.

Key Features:

B200 Medium Office Brewer

- Two brew sizes – 6 and 8 oz.
- Removable, dishwasher safe drip tray
- CUL and UL approved for commercial use

Enhanced Features for B200 Brewers:

- Back-to-back brewing every 60 seconds
- LED water tank level indicator
- LCD Interface in three languages – English, French, Spanish
- Direct line water plumbed or pour over filling options (holds 8 cups – 64 oz.)
- Size 16" H x 18" D x 10.25" W, 24 lbs. (empty)



KEURIG® B3000 BREWING SYSTEM

The large, full-featured model – for offices that prefer the utmost convenience. Perfect for office locations with over 30 employees.

Key Features:

B3000 Large Office Brewer

- Four brew sizes – 4, 6, 8 or 10 oz.
- Removable, dishwasher safe drip tray
- Back-to-back brewing every 60 seconds

Enhanced Features for B3000 Brewers:

- Automatic used K-Cup® ejection and storage
- Direct line water plumbing for high capacity brewing
- Digital user interface/easy-to-read LCD Screen
- Users can self select three language options
- Step-by-step brewing instructions
- Mug and K-Cup sensors prevent accidental brews
- Installed at your location for no additional charge
- Size 17" H x 18" D x 12" W, 35 lbs. (empty)





Your logical choice for Air Conditioning • Heating • Fire Alarm • Building Automation

Logical Control Services, LLP is a full service air-conditioning, controls, and fire alarm company. LCS is committed to providing the highest level of integrity, craftsmanship, and quality possible to you, our Customer.

Commercial Heating and Air-Conditioning Repair Service
Preventive Maintenance Contracts
Building Automation

New Construction Bid and Spec Work
Controls Service and New Installation
Fire Alarm

Serving churches throughout the Metroplex

24-Hour Service Serving Dallas-Ft. Worth Metroplex

Office: 972-820-0100 Fax: 972-820-0101 Carrollton, Texas 75006
www.lcstexas.com TACLA#023969E

Furniture you need. Quality you trust!



For 20 years churches have trusted Mity-Lite. Customers know that our tables, chairs and other multi-purpose products are built better and last longer than other furniture. So, why not experience Mity-Lite's legendary quality for yourself?

Call 1-800-327-1692 for a free product sample or to request our catalog. We look forward to serving you soon!

MITY-LITE Durable Lightweight Furniture Systems

mitylite.com • 1301 West 400 North, Orem, Utah 84057



Austin 512.388.8000 Houston 713.672.8080 San Antonio 210.661.4581 Dallas 469.384.6700 Lubbock 806.747.2678

SYSCO offers the widest selection of food and related products in the industry. PointSource has created a manufacturer rebate and allowance program, comprised of agreements with over 90 manufacturers, which they offer in sync with SYSCO. The services are free of cost to CO+OP ministries. PointSource invoices manufacturers quarterly and returns to your ministry the rebates and allowances earned. Together SYSCO and PointSource can quickly and efficiently reduce your food costs.



To sign up or inquire about the program, please call **Dieter Kadoke at 214-336-0935**

banknotes

By Dale Rahlfs

In my twenty-two years of banking industry experience, I cannot recall a time that has been as difficult and challenging as the last six months. The topic of a healthy banking system has never, in my experience, been as critically discussed and dissected by the financial analysts, commentators, news media and the general public as it has in these troubled times.

Thousands of news articles have been drafted over this time period, discussing in great detail the capital ratios, Troubled Asset Relief Program (TARP) funds, preferred stock issues, FDIC insurance limits, quarterly loan losses, loan loss reserves, and status and speculation about the health of this country's banks and the banking system in general.

How healthy is your bank? The health of the banking system is a mirror reflection of the current economic condition, so the real question is: How healthy is your economy? Here in Houston, we have weathered this economic storm in a relatively safe harbor and luckily, have not experienced some of the difficulties that other parts of the country have, but we are not immune to the long term effects of this recession. Earnings have dropped, business owners are more cautious about spending on plant and equipment, and charitable giving has decreased. Many churches are experiencing declines in contribution levels and as a result, are delaying capital campaigns or expansion plans.

Just as you expect your banker to understand the unique challenges and needs of banking in a faith based, non-profit institution, you should take the time to educate yourself about your banker and his business. Rumors and speculation can be a dangerous wildfire in today's

financial markets, so take the time to review the quarterly reports filed by your bank or the reports filed with the appropriate regulatory agency. Learn to understand the capital ratios and analysis of loan loss reserves. Ask questions about your bank's lending activities and balance sheet structures. What is the primary focus of your bank? Did they engage in risky sub-prime lending activities? Engage your finance committee to provide research and informative analysis on the health of your bank. Start a dialog with your banker and ask these questions. Don't rely on speculation, rumors, or uneducated opinions.

Borrowing and lending are two sides of the same coin. It takes a willing lender and a willing borrower, with trust in each other to make a successful banking relationship. Now, more than any other time, having a strong relationship with your banker is critical to your business office. Engaging your banker in a regular dialog about your giving, expenses, long term plans and debt service requirements will be the key to maintaining an ongoing relationship with your bank. Prompt financial reporting and loan covenant compliance are being closely reviewed by your banker and his regulatory agencies. The focus on credit quality in our nations' banks is at the highest level in years and you don't want your loan to be the next classified asset at your bank. If you identify a potential problem or loan covenant violation, call your banker as soon as you can. Full disclosure is of critical importance in these situations. Your banker will appreciate the call and prompt attention or action by your bank in many cases, can prevent a major problem later on.

Maintaining a strong positive relationship with your banker during this time period will be key to the health of your banking relationship, the health of your bank, and the health of our economy. ✦

Dale Rahlfs

Dale Rahlfs is a Vice-President with Comerica Bank and has 22 years of banking experience. He and his wife live in The Woodlands, Texas, and attend Grace Crossing Church, a community Church of Christ where he is a member of the finance committee. Dale has been a Board Member of the Church CO+OP since May of 2006 and currently serves as the Board Chairman.

HILLYARD THE Cleaning Resource®



Your Source For Green Cleaning Expertise

- Green Seal™ Certified Products
- Assistance With Implementing Green Cleaning Processes



Innovative Cleaning Systems

- Simplified Touch-free Cleaning Systems
- Chemical Management & Dilution Control Programs
- Controlled Use Paper Delivery Systems



Equipment Sales and Service

- No Charge Productivity Analysis
- Equipment Demonstrations
- Preventative Maintenance Plans



Floor Care Expertise & Products

- Wood Sports Floor Care
- Resilient and Hard Floor Care
- Carpet Care Programs



Effective Training Solutions

- Custom Cleaning Process Cards
- On-site Training Assistance
- Complete Training Library



Hillyard has been providing cleaning solutions, maintenance supplies, and equipment for over 100 years. Nationally we've become known as "THE Cleaning Resource®".

We've earned a reputation of being the best at:

- troubleshooting,
- consulting,
- training and problem solving.

Hillyard
(Houston)
800.399.8489

Hillyard
(San Antonio)
800.728.4120

Cleancare, Inc.
(Mesquite)
800.688.9425

www.hillyard.com

we've got you covered

by Gary Benson

Are You Ready For Summer Activities?

Children's camps, youth camps, mission trips and many other such activities often dominate an active church's calendar during the summer months. Several months and sometimes years of planning go into these types of trips, so knowing how your insurance coverage might or might not apply is just as important.

Please allow me to highlight some bits of information that might help in your planning.

Q: If we are driving a vehicle into Mexico, do we need to buy any additional coverage?

A: Yes. We strongly recommend purchasing Mexico insurance for any vehicle crossing the border into Mexico. It's important to understand that Mexico's laws treat auto accidents differently than Texas laws. In Mexico, drivers can be held both criminally responsible and financially liable for accidents they cause. If anyone is injured, police may detain the drivers while they sort out who caused the accident. And the insurance for your organization may not extend to Mexico. In short, save yourself any potential hassles and purchase coverage from authorized Mexican casualty insurance companies before entering Mexico. An example of where you can get a quote and purchase your Mexico auto insurance policy is www.sanbornsinsurance.com.

Q: If we are traveling outside the United States, do we need any type of special medical coverage?

A: Maybe. International medical insurance will respond to an emergency medical need should you become ill or have an accident while traveling overseas, often including medical evacuation. Your current health insurance plan may provide coverage to you while abroad, but you should contact your carrier and ask if or how you are covered. Just as important, ask about medical evacuation should that become necessary. A good international medical insurance plan will provide that coverage. More information can be found on our website www.insuranceonewoodlands.com.

Q: If we are taking church/school-owned equipment outside the United States, will it be covered?

A: Maybe. Most companies will provide coverage within the Continental United States but outside that territory, the coverage will vary among companies. Some will provide limited coverage, while others will provide none at all. Contact your agent to be sure what limits might apply for your specific circumstances.

Q: Does our General Liability coverage apply to overseas mission trips?

A: Generally speaking, no. Most companies will provide coverage within the Continental United States or for lawsuits brought within the United States, otherwise you will need to seek foreign liability coverage.

Summer Activity Checklist

- Have you obtained proper Waiver Forms for all participants? We suggest that you use insurance pre-approved forms and/or your own forms that have been reviewed by proper legal counsel.
- If you are providing or arranging transportation, are you using drivers that have been pre-approved based on age (recommended 25 to 70) and good driving records?
- Are you using transportation other than 15-passenger vans? Use of these vehicles is still not recommended due to safety concerns. However, if you do elect to use this form of transportation, do not allow passengers in the rear seat or if that seat is removed, do not place luggage in that area or tow any type of trailer.
- Have you adequately screened all adult sponsors and have you provided adequate training for them? This should include (1) background checks (2) training in church policy and guidelines, possibly including a stated code of ethics (3) driver qualifications as applicable and (4) CPR training (minimum one trained personnel per group).
- Do you have an emergency response plan in the event of an emergency, such as a vehicle accident or serious medical injury?
- For Vacation Bible Schools, do you have adult sponsors that supervise the involvement of teen workers and assure that they are never left unattended?
- Do you have easily accessible records of release forms, medical histories and applicable health insurance information in the event of a medical condition requiring treatment?
- Are you aware of how your insurance coverage will or will not apply in any given activity? Have you notified your agent of any "hazardous" activity you are considering and has that activity been approved?

This information may not completely eliminate the risks for your summer activities, but a little planning ahead could help you save ministry dollars, time, and stress. Your "due diligence" will definitely help keep risks low, so you can spend your time and resources on true mission work and the enjoyment of your other activities. ✦

Gary Benson

Gary Benson is a 25-year insurance professional. He owns and operates the Insurance One Agency in The Woodlands, Texas. You can reach Gary at garyb@insuranceoneagency.com. For more information about Insurance One, see his website www.insuranceonewoodlands.com.

COMPLETE SECURITY INVESTIGATIONS

CSI

COUNTY LEVEL CRIMINAL SEARCHES
INSTANT DATABASE SEARCHES
VOLUNTEER SCREENING
MOTOR VEHICLE REPORTS
SEX OFFENDER REGISTRY SEARCHES
SOCIAL SECURITY TRACES
CIVIL RECORD SEARCHES
STATEWIDE & FEDERAL CRIMINAL SEARCHES
NATIONAL WANTS AND WARRANTS

Have you ever been convicted?
 YES
 NO

214-329-9156

INSURANCE ONE

PROPERTY
GENERAL LIABILITY
WORKERS COMPENSATION
GROUP BENEFITS
RETIREMENT PLANNING
AUTOMOBILE
UMBRELLA

www.insuranceonewoodlands.com

HOUSTON
GARY BENSON
281.350.6277
TOLL FREE
800.896.8218
GARYB@INSURANCEONEAGENCY.COM

DFW METROPLEX
RICK McCRARY
972.223.1700
TOLL FREE
800.364.1277
RICK@INSURANCEONEAGENCY.COM

INSURANCE ONE AGENCY, LC.

As a leading Insurer of churches, Insurance One can provide your organization with the industry's finest lineup of coverages and services.

All Your Church Needs Under One Roof!

- Roofing
- Air Conditioning
- Refrigeration
- Ice Makers
- Plumbing
- Electrical
- New Construction
- Remodeling
- Make Ready
- Tenant Finish
- Painting
- Glass
- Concrete
- Carpentry
- Kitchen
- Appliances
- Repairs
- Tile
- Flooring
- Carpet



Flat Roofing & Construction Specialists

Call 972.261.1100 Today!
www.arkconstruction.net

Church Communication...*that Works!*



PhoneTree[®] congregational messaging systems make it easy for you to send calls, texts and emails using your current membership data — so you don't have to retype anything to automatically get messages to your church's groups. Just upload any list and go! Plus, our compatibility with all leading church management software systems makes the process even more seamless, saving you valuable time and helping your church **Engage *all the people.***



800.951.8733 | phonetree.com/coop0509

knowyourvendor

National Signs



National Signs is the recognized leader in creating unique and effective signs for worship facilities of all denominations.

Now in our 18th year, National Signs has grown to become one of the largest custom sign manufacturers in the country. Our commitment to quality design and fabrication, along with our personalized customer service, sets us apart.

National Signs provides total solutions for church sign projects of any size. From design, engineering and permitting, to manufacturing, project management and installation, National Signs handles it all.

We are also experts at creating custom-crafted signs incorporating state-of-the-art LED message centers. There's no more effective and flexible way for you to communicate with parishioners, passers-by and the community.

National Signs owns our 60,000 square foot ultra-modern facility and because of that, we are able to maintain total quality control over the manufacturing process. This attention to detail ensures the signage we produce is of the highest quality and accuracy. Our facility features the latest in sign fabrication equipment and technology to better serve you, our clients.

As a testament to National Signs' commitment to quality, all of our LED message center signs come with an unprecedented 5-year parts and labor warranty on the entire sign package. We also offer in-house financing, so no message needs to go unheard. In all aspects, we are committed to meeting your needs and exceeding your expectations.

National Signs has been a proud CO+OP supporter for many years. In that time, we have crafted some of the most beautiful and inspiring signs for CO+OP members, and we look forward to working with many more in the years to come.

Call National Signs at 713-863-0600 or visit our website www.nationalchurchsigns.com to see our latest creations and learn more about how we can help your church communicate more effectively.

PhoneTree



Church Communication That Works!™

Is your church still sending out communications manually, tying up valuable resources and reaching only a small percentage of your membership? In this day of economic challenges, your church needs a communication system that is fast, dependable and affordable. A PhoneTree Congregational Messaging System will help increase efficiencies in your church by greatly reducing the amount of time, funds and internal resources used to send messages. Effective, consistent communication is proven to help boost attendance and contributions, generate loyalty, and foster a sense of community within the church. From prayer chains, to funeral announcements, fundraising and volunteer recruitment, PhoneTree can help.

The original PhoneTree concept, pioneered in the church in 1989 by founder and CEO A.J. DiBianca, has matured into a highly successful business with employees around the country and worldwide. We've been revolutionizing the voice and e-messaging industry, saving time, money, and improving communication for thousands of churches just like yours. With a wide variety of messaging systems to fit any need, PhoneTree can help you Engage™ others easier, faster and more effectively than ever before.

All PhoneTree systems are designed and manufactured in the United States. Along with many other credentials, PhoneTree is an MGMA AdminiServe Partner, a Better Business Bureau accredited business, a member of the National Association of Church Business Administrators, and is a member of the Christian Leadership Alliance.

To learn more about PhoneTree or to sign up for a no-cost demonstration, visit our website at www.phonetree.com or give us a call at 800.951.8733.

We look forward to helping you with your church communications!

PhoneTree® | 2400 Reynolda Road | Winston-Salem, NC 27106

Vendors

ADMINISTRATION

Advertising

Educational Products, Inc.

www.educationalproducts.com

Michelle Jecker 877.928.3771 HC Austin

mjecker@educationalproducts.com

Jeff Oberkrom 800.635.5345 DFW

joberkrom@educationalproducts.com

Marta Savin 800.635.5345 HOU

msavin@educationalproducts.com

Ernest Ideas Design & Media Group

Editability Publishing

www.ernestideas.com

Paul Ernest 972.562.5380

paul.ernest@ernestideas.com

Background Screening

Complete Security Investigations, LLC

www.csidfw.com

Kevin Conrad 866.892.2078

kevin@csidfw.com

Church Consulting

Upright Ministries

www.uprightministries.com

Patti Malott 281.797.8619

patti@uprightministries.com

Badges

Office Depot Business Solutions Division

www.bsd.officedepot.com

Kerri McDonnell 832.477.3547 HOU

kerri.mcdonnell@officedepot.com

Stamps

Express Stamp/Schwaab

Customer Service

Sherry Witt 877.782.6771 x441

switt@schwaab.com

Office Depot Business Solutions Division

Promotional Products and Copy/Print

www.bsd.officedepot.com

Rose Wherry 713.996.3156

rose.wherry@officedepot.com

Carole Williams 512.837.8999 x104 HC

carole.williams@officedepot.com

Printing

Varidoc

www.varidoc.net

Scott Muckensturm 214.528.9925 x118

scott@varidoc.net

Office Depot Business Solutions Division

Digital Print and Binding Services/Custom Stationary

www.bsd.officedepot.com

Kerri McDonnell 832.477.3547 HOU

kerri.mcdonnell@officedepot.com

Rose Wherry 713.996.3156

rose.wherry@officedepot.com

Carole Williams 512.837.8999 x104 HC

carole.williams@officedepot.com

School Supplies

Educational Products, Inc.

www.educationalproducts.com

Michelle Jecker 877.928.3771 HC Austin

mjecker@educationalproducts.com

Jeff Oberkrom 800.635.5345 DFW

joberkrom@educationalproducts.com

Marta Savin 800.635.5345 HOU

msavin@educationalproducts.com

FACILITIES

Air Conditioning/HVAC

Building Automation Controls Installation, Service & Security

Accurate Air Systems /

Comfort Systems USA

www accuratairsystems.com

Kendall Fountain 214.869.2480 DFW

kendall.fountain@accuratairsystems.com

Shane Hindman 832.309.1025 HOU

shaneh@accuratairsystems.com

James Newsome 832.256.4617 HOU

jamesn@accuratairsystems.com

Logical Control Services, LLP

www.lcstexas.com

Ron Pogue 972.820.0100 DFW

rpogue@lcstexas.com

Building Maintenance Services

Professional Janitorial Service

www.pjs.com

Jim Shaw 713.850.0287 HOU

jshaw@pjs.com

Allen McKee 512.447.0477 AUSTIN

amckee@pjs.com

Scott O'Brien 210.824.3367 HC San Antonio

sobrien@pjs.com

Catastrophic Recovery, Carpet and Duct Cleaning

Blackmon Mooring

www.blackmonmooring.com

Paul Schulze 877.730.1948 HOU

pschulze@bmsmanagement.com

Tom Lackey 817.385.3403 DFW

tlackey@bmsmanagement.com

Marilyn Batter 832.247.7201 HOU

mbatter@bmsmanagement.com

Janitorial/Sanitation Supplies & Equipment

Hillyard, Inc. 800.399.8489

www.hillyard.com

Ken Kippes 281.460.2774 HOU

kkippes@hillyard.com

Kim Woods 832.646.0383 HOU

kwoods@hillyard.com

John Swart 281.389.3806 HOU

jswart@hillyard.com

Dan Fox 713.299.2382 HOU

dfox@hillyard.com

Mark Curtis 800.728.4120 HC San Antonio

mcurtis@hillyard.com

Gary Fisher 210.275.3474 HC San Antonio

gfisher@hillyard.com

Brian Taylor 210.722.5132 HC San Antonio

btaylor@hillyard.com

Roland Castillo 210.685.2601 HC San Antonio

rcastillo@hillyard.com

Paul Deutsch 512.529.1583 HC Austin

pdeutsch@hillyard.com

Rosie Reyes 956.206.4355 Laredo

rreyes@hillyard.com

CleanCare, Inc.

www.hillyard.com

Jay Baucum 800.688.9425 DFW

Tom Woods 972.329.0022 DFW

Electric Energy Savings

U-Save Energy

www.caftx.com

Chuck Thompson 469-853-4123

cthomp005@gmail.com

TES Energy Services, LP

www.tesenergyservices.com

Michael Bernstein 972.447.0447 x105

mbernstein@tesenergyservices.com

Floor Covering

Sports/Multi-Purpose Flooring

Vector Concepts, Inc.

www.vectorconcepts.com

Bill Austin 800.544.8314 cell 214.504.4714

baustin@vectorconcepts.com

Jody Skaggs 800.544.8314

jskaggs@vectorconcepts.com

Carpet, Wood, Vinyl & Sports/

Multi-Purpose Flooring

Church Interiors Inc. of Texas

www.churchinteriorsoftexas.com

Mack Phipps 254.652.2084

mhipps@churchinteriorsoftexas.com

Ed Butler 972.872.5495

ebutler@churchinteriors.com

Furniture

Integrity Furniture & Equipment

www.integrityfurniture.com

Drew Coleman 888.600.8639

drew@integrityfurniture.com

Furniture - Pews, Chairs & Cushions

Church Interiors Inc. of Texas

www.churchinteriorsoftexas.com

Mack Phipps 254.652.2084

mhipps@churchinteriorsoftexas.com

Ed Butler 972.872.5495

ebutler@churchinteriors.com

Office Depot Business Solutions Division

Office Furniture, Space Planning & Educational Furniture

www.bsd.officedepot.com

Rose Wherry 713.996.3156

rose.wherry@officedepot.com

Carole Williams 512.837.8999 x104 HC

carole.williams@officedepot.com

Mity-Lite Tables & Chairs

www.mitylite.com

Brandon Ross 800.362.6554

brandonr@mitylite.com

Locks & Security Systems

DeBow Lock & Safe Co.

Jeff DeBow 281.398.6703

debowllockandsafe@sbcglobal.net

Office Copier/Duplicator Equipment

American Business Machines

www.abmtexas.com

Tony Chiovitti (713) 688-8873

tchiovitti@abmtexas.com

Riso, Inc.

http://us.riso.com

Michael Samson 972.481.8750 x11 DFW

msamson@riso.com

Kurt Gilbert 713.782.5080 x101 HOU

kgilbert@riso.com

Office Equipment & Supplies

Office Depot Business Solutions Division

Office Supplies, Furniture, Promo

Products & Copy/Print

www.bsd.officedepot.com

Rose Wherry 713.996.3156

rose.wherry@officedepot.com

Carole Williams 512.837.8999 x104 Hill Country

carole.williams@officedepot.com

Plumbing

Accurate Air Systems / Comfort Systems USA

www.accurateairsystems.com

Kendall Fountain 214.869.2480 DFW
kendall.fountain@accurateairsystems.com
Shane Hindman 832.309.1025 HOU
shaneh@accurateairsystems.com
James Newsome 832.256.4617 HOU
jamesn@accurateairsystems.com

Audio, Video & Lighting

Church Interiors Inc. of Texas

www.churchinteriorsoftexas.com

Mack Phipps 254.652.2084
mphipps@churchinteriorsoftexas.com
Ed Butler 972.872.5495
ebutler@churchinteriors.com

Roofing

Carlson Roofing Company, Inc.

Mark Carlson 281.374.7657
carlsonroofing@peoplepc.com

Ark Construction

www.arkconstruction.net

Keith Flaherty 972.261.1100 DFW
kflaherty@arkconstruction.net

Interior Renovations - Painting, Carpentry & Millwork

Church Interiors Inc. of Texas

www.churchinteriorsoftexas.com

Mack Phipps 254.652.2084
mphipps@churchinteriorsoftexas.com
Ed Butler 972.872.5495
ebutler@churchinteriors.com

Signs

National Signs, Ltd.

www.nationalchurchsigns.com

Al Ross 713.863.0600 x218
al.ross@nationalsigns.com

Teleconferencing

Civicom

www.civi.com

Rebecca West 203.618.1811
rwest@civi.com

Telephone Equipment, Cable Installation & Services

DataVox

www.datavox.net

Neil Ferguson 713.881.7107
neil@datavox.net

PhoneTree

www.phonetree.com

Mike Doss 800.951.8733 x 1014
mdoss@phonetree.com

FINANCES

Comerica Bank

www.comerica.com

Dale Rahlfs 281.423.3161 HOU
derahlfs@comerica.com
Charles Dowden 214.589.4496 DFW
cwendowden@comerica.com
Jim Terrell 214.589.1310 DFW
jcterrell@comerica.com
David Marks 512.427.7116 HC
dhmarks@comerica.com

Church Consulting

Upright Ministries

www.uprightministries.com

Patti Malott 281.797.8619
patti@uprightministries.com

FOOD SERVICE

Sysco/PointSource

Dieter Kadoke 214.336.0935
dkadoke@pointsource.com
info@pointsource.com

Creative Coffee

www.creativecoffee.com

Terry Lampman 281.579.2224 HOU
creativeci@aol.com

INSURANCE

Insurance One Agency

www.insuranceonewoodlands.com

Gary Benson 800.896.8218 HOU
garyb@insuranceoneagency.com
Rick McCrary 800.364.1277 DFW
rick@insuranceoneagency.com

INFORMATION TECHNOLOGY

Computer Systems

IT Fidelity

www.itfidelity.com

Mike Beckham 832.476.3188
mike.beckham@itfidelity.com

CO+OP Vendor Ads

Alphabetical Listing

Accurate Air Systems /
Comfort Systems USA *Page 10*
American Business Machines *Page 5*
Ark Construction *Page 42*
Blackmon Mooring *Page 7*
Carlson Roofing Co., Inc. *Page 30*
Church Interiors, Inc. *Page 11*
CleanCare, Inc.
included in Hillyard ad *Page 39*
Comerica Bank *Page 2*
Complete Security
Investigations, LLC *Page 41*
Creative Coffee, Inc. *Page 11*
DataVox Business
Communications *Page 30*
DeBow Lock & Safe *Page 11*
Educational Products, Inc. *Page 5*
Ernest Ideas Design &
Media Group *Page 15*
Hillyard, Inc. *Page 39*
Insurance One Agency *Page 41*
Integrity Furniture & Equipment *Page 15*
IT Fidelity *Page 10*
Logical Control Services, LLP *Page 37*
Mity-Lite Tables & Chairs *Page 37*
National Signs *Page 48*
Office Depot Business Solutions
Division *Page 36*
PhoneTree *Page 42*
Professional Janitorial Service
of Houston *Page 7*
RISO, Inc. *Page 16*
Sysco/PointSource *Page 37*
Tell People You Know *Page 16*
TES Energy, Inc. *Page 47*
Upright Ministries *Page 30*
Vector Concepts *Page 10*

New Members

Abundant Life Cathedral, Houston, TX
Bear Creek UMC Preschool, Houston, TX
Bear Valley Community Church, Colleyville, TX
Bellmead Calvary Baptist Church, Waco, TX
Calvary Episcopal Church, Richmond, TX
Christ Fellowship Church, Pinehurst, TX
Church of the Holy Apostles, Katy, TX
Community of Faith, Cypress, TX
Crossroads Fellowship, Houston, TX
Cypress Pointe Baptist Church, Cypress, TX
Denton Wesley Foundation, Denton, TX

Duncanville's First Baptist Church, Duncanville, TX
First United Methodist Church, Georgetown, TX
Grandview Baptist Church, Mesquite, TX
Kids Kaleidoscope Preschool, Spring, TX
Messiah Lutheran Church, Plano, TX
Mission Bend Christian Academy, Houston, TX
Northgate United Methodist Church, Irving, TX
St. Andrew's Episcopal Church, Houston, TX
St. Aidan's Episcopal Church, Cypress, TX
Temple Christian Academy, Lewisville, TX
The Bridge Christian Fellowship, Irving, TX

Become a Member and Grow Together with the Foundation of Good Stewardship Resources ... the Church CO+OP

CO+OP: the original group purchasing organization for churches and their related organizations, including schools, camps and para-church ministries.

What CO+OP is: Our CO+OP is a non-profit, 501(c)3 group purchasing relationship, in business since 1988, operated by a board of directors. We are Members and Vendors working together to provide significant savings on goods and services.

Why CO+OP: The purpose of our CO+OP is to help ministries save money on the goods and services they are buying. Examples include:

- office supplies
- electricity
- banking
- food service
- security systems
- signs
- copiers and duplicators
- HVAC resources
- lamps and electrical supplies
- coffee service
- travel planning and ticketing
- advertising and graphic design services
- church consulting
- background screening
- insurance
- janitorial and sanitation supplies and tools
- roofing and construction
- plumbing
- printing
- furniture and equipment
- janitorial service
- maintenance, repair parts and tools
- disaster recovery and carpet cleaning
- locksmith service
- telephone and equipment services
- IT services and equipment
- congregational messaging tools and services

Vendors with a national presence include:

- Blackmon Mooring
- Church Interiors
- Comerica Bank
- Comfort Systems / Accurate Air
- Complete Security Investigations
- Hillyard
- Insurance One
- Mity-Lite
- National Signs
- Office Depot
- PhoneTree
- RISO, Inc.
- Upright Ministries

How to participate: Join online at www.churchco-op.org or phone 888.350.3264 to enroll.

20+
YEARS
...AND COUNTING
CHURCH SUPPLIES & SERVICES INC.

Participating member with National Association of Church Business Administration and local chapters in Austin, Dallas, Fort Worth, Houston and San Antonio.





TES Energy Services, LP presents:

Lowering Your Electricity Costs at Your Church!



A Proud New CO+OP Vendor!

TES Energy Services, LP will negotiate the lowest cost electricity contract for your Church facilities!

✓ ***Why are electricity prices being quoted at 3 year lows both for residential and commercial!***

With a simple Letter of Authorization (LOA) our team of energy experts will go to work to offer you an honest, "apples to apples" comparison of savings among providers.

We will present your organization with an "indicative price" based on a broad spectrum of strategies and pricing models that match your energy goals.

✓ ***Individual Attention***

By customizing a provider's contract terms to fit their buying strategies, TES Energy Services, LP has significantly added value to many of our property managers' portfolios.

✓ ***Relationship with Providers***

Placing over 2 billion KWH, we have great buying power and very strong, positive relationships with all Texas Retail Electric Providers.

✓ ***Market Timing***

Today's marketplace is a fast changing, commodity-based playing field. We are constantly monitoring the marketplace - "every hour" - for buying patterns, enabling you to focus on your specific business issues.

✓ ***Competitive Negotiations***

TES Energy Services, LP brings the providers that are interested in your specific needs into a "Hot Box" to push the price down.

Once your "Strike Price" has been negotiated, then you are presented with one or more contracts and strategies to choose from.

✓ ***As Your Consultant***

As your consultant, we will represent you for any issues in the future with your contracted provider (billings, meters etc.).

TES Energy Services, LP will bid your church's electricity among these low cost providers!



CALL FOR A QUOTE:

972-447-0447 X105

www.tesenergyservices.com

"Integrity, Knowledge, Experience"

Communicate

Your vision, your passion, and your message to the world



signs move you

701 Sentence Sermons

by L. James Harvey

Discover profound yet simple "Sentence Sermons" with your church sign in this clever book from Kregel Publishing. As a gift from National Signs, this book is available just for the asking.



Thank you to all who attended our information sessions at the CO+OP Staff Conference. We enjoyed it!

Your LED message center sign is backed with our 5-year parts and labor warranty on the entire sign.

Ask about our financing options

Listening is the first step to helping people get what they need. How you want to greet parishioners and new guests is where we start. Your sign is an extension of your overall message. It symbolizes your church, your philosophy and your style. National Signs is the industry leader in helping churches communicate their message. We are experts at unique. Call us today and we'll create a sign that will win hearts, minds and souls.



National Signs

713-863-0600 ★ Toll Free 800-659-6285 ★ nationalchurchsigns.com



Church Supplies & Services, Inc.

P.O. Box 821243
Houston, Texas 77282-1243
281.531.5629 - Main
281.531.4137 - Fax
www.churchco-op.org